



BL 2604



Laser Barcode Scanner

- 300 ft (100 m) operational range
- Ergonomic design
- Audible & visible indicators

The BL2604 is a component of the 2604 Serie. Its gun-shaped and protected form factor offer efficient use of the scanner in multiple environments.

The 2604 family is a class 1 product, this means barcodes can be transmitted up to 100 meters.

Thanks to the laser technology, the BL2604 perfectly fits to applications requiring an aggressive scanning. It is designed to read barcode from a great distance.

Reading distance: up to 17 in (53cm)



About Baracoda

Baracoda is the world's first and only manufacturer offering a full range of Bluetooth barcode scanners. Baracoda's field-proven wireless and barcode scanning solutions provide its customers and partners with efficient tools that are innovative, reliable and convenient to use, simplifying integration for a quick Return On Investment.

The bluetooth name and Bluetooth registered trademarks are owned by Bluetooth SIG, Inc., and are used by Baracoda under license. The Baracoda names and Baracoda trademarks are own by Baracoda. All specification are subject to change without notice - Non contractual pictures © Baracoda - All rights reserved

Switzerland • OPAL Associates AG • Motorenstrasse 116 • CH-8620 **Wetzikon** • Telefon +41 (0)1 931 12 22 • Telefax +41 (0)1 931 12 20 • Email info@opal-holding.com • URL <http://www.opal.ch/> • OPAL Associates SA • Avenue des Boveresses 54 • Case postale 29 • CH 1000 **Lausanne** 21 • Telefon +41 (0)21 653 95 00 • Telefax +41 (0)21 653 95 02 • Email info@opal-holding.com • URL <http://www.opalsa.ch/> •
Germany • OPAL Associates GmbH • Lohnerhofstrasse 2 • D-78467 **Konstanz** Telefon +49 (0)7531 813 000 • Telefax +49 (0)7531 813 00 99 • Email info@opal-holding.com • URL <http://www.opalqmbh.de/> • OPAL Associates GmbH • Osterholder Allee 2 • 25421 **Pinneberg** • Telefon +49 (0)4101 787 615 • Telefax +49(0)4101 787 616 • Email info@opal-holding.com • OPAL Associates GmbH • **München** • Telefon +49 (0)89 12737 556 • Telefax +49 (0)89 12737 557 • Email info@opal-holding.com • OPAL Associates GmbH • **Frankfurt** • Telefon +49 (0)69 8236 6501 • Telefax +49 (0)69 8236 7709 • Email info@opal-holding.com • OPAL Solutions GmbH • Wilhelmstr. 22 • 52428 **Jülich** • Telefon +49 (0)2461 690 280 • Telefax +49(0)2461 690 284 • Email info@opal-holding.com • URL <http://www.opal-solutions.de/> •
Austria • OPAL Associates GesmbH • Vorarlberger Wirtschaftspark • A-6840 **Götzis** • Telefon +43 (0) 5523 58833 • Telefax +43 (0)5523 521569 • Email info@opal-holding.com • URL <http://www.opalqmbh.at/> • OPAL Associates GesmbH • Donaufelderstr. 101/2/8 • **1210 Wien** • Telefon +43 (0)1 270 03 13 • Telefax +43(0)1 270 03 15 • Email info@opalqmbh.at



BL 2604 Specifications

STANDARD - REGULATORY

Fully compliant with Bluetooth® 1.1 Standard Gap & SPP profiles.
CE - FCC - Bluetooth qualified.
Class 1 Laser product.

USER INTERFACE

Tri Color LED - Buzzer

BLUETOOTH RANGE

Class 1: 300ft - 500 ft (100m - 150m)

OPERATING MODES

Real Time
Master
Batch (1000 UPC barcodes, Flash Memory 64Kbytes)

READING MODES

Autoscan
Trigger

SCAN ENGINE

Reading technology Laser
Reading distance Up to 21 in (53cm)
Scan rate 42 scans/s
Scan angle 46° (+ / - 2)
Light source laser 650 nm

DECODING CAPABILITIES

Bar Codes Supported UPC-A/E, EAN-8/JAN-8, EAN-13/JAN-13, EAN128, Code 32, Full ASCII code 39, code 39, code 93, Interleaved 2 of 5, industry 2 of 5, Codabar, Code 128, Chinese Postcode, IATA and MSI/Plessey code.

POWER

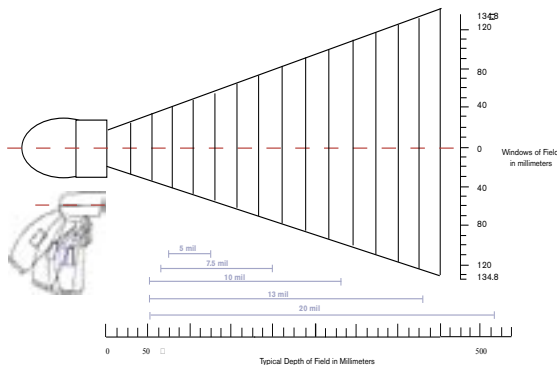
2 x AAA NimH - 2100 mAh rechargeable
Battery life: more than 15 000 scans

PHYSICAL

Length 5.63 in (143 mm)
Width 3.10 in (78.8 mm)
Height 6.08 in (154.5 mm)
Weight 6.08 oz (180 g) without batteries

ENVIRONMENT

Operating temperature 32°F (0°C) - 122°F (50°C)
Storage temperature 14°F (-10°C) - 140°F (60°C)
Operating humidity 5 - 95% (No condensing)
Shock Several 3.3ft (1m) drops to concrete
Ambient light Full darkness to sunlight



General features

One click connectivity products:

Just switch on your scanner to get connected!

No data loss guarantee:

Barcodes are stored within internal memory until they are acknowledged by the application.

Auto Reconnection:

If you scan barcodes out of the radio range, they will be stored in memory and automatically downloaded when getting back into range.

One product, two modes:

- The scanner can be used in the Real Time Mode or Batch Mode.
- Real time mode will send barcodes while scanning.
- Batch mode will store barcodes on the scanner and the user will upload them when needed.

Intuitive user interface:

- Only one button to switch on, connect and scan barcodes
- Multi color led for connection and battery status
- Sound beeps for successful scanning.

Platforms compatibility:

Baracoda provides users with user-friendly software (BaracodaManager) and provides developers with state of the art APIs to ease the integration on the following mobile platforms:

- PC
- PPC 2002/2003; CE.NET; Palm OS
- Symbian (Mobile Phones)
- Most Bluetooth devices (printers, access points, ...)

Plug and Play Solution

Real Plug & Play solution with Baracoda Serial Dongle (compatible with all devices equipped with a RS232 port)

Package content



1 BL 2604
2 rechargeable batteries
1 Charger
1 CD with all the documentation and software needed.

Available accessory



Protective boot:

The protective boot for the 2604 Serie is made of ruggedised high density foam. It is made by two separate units -one covering the hood and the second covering the base of the handle of the scanner- linked together by an elastic rope. While the protective boot does add some bulk to the scanner, its shock protection value compensates for this size increase. The protective boot also offers a small ring that can be attached to a lanyard or a retractable badge reel. It is ideal for mobile workers who need a rugged product.