

TEKLYNX®

PRINTPAD™ 6000

Reloaded

SETTING THE STANDARD

NEW

EASY
PROGRAMMABLE
POWERFUL



BAR CODE PRINTING TERMINAL



PRINTPAD™ 6000 Reloaded Applications



RETAIL

- Tag and bar code all inventory or assets in your store or plant
- Create unique labels to personalize and package merchandise
- Meet compliance labeling requirements



PRODUCTION

- Use on the production floor without the presence of a PC to scan, print and verify all stored label formats

SHIPPING

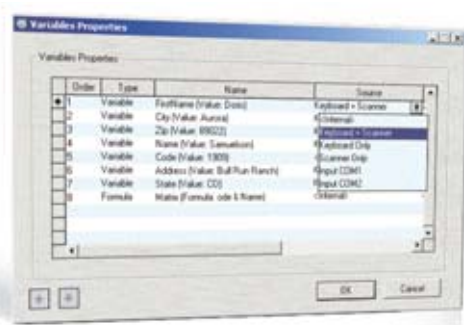
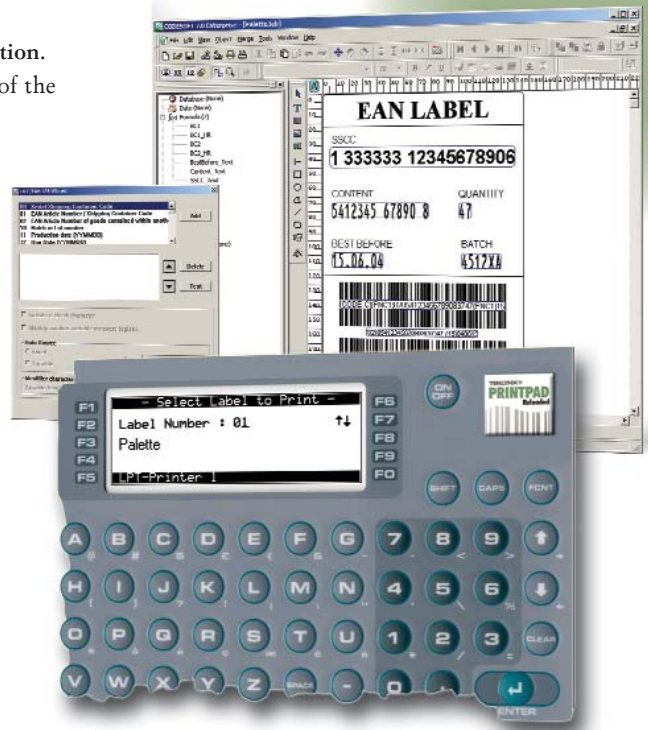
- Expedite complex shipping requirements
- Import data from scales, scanners and verifiers via dedicated port



Go further with the printing terminal

PRINTPAD™ 6000 Reloaded

- Teklynx has launched its next generation stand-alone printing solution. This new engine provides the speed and capability to power many of the newly added features to this robust and very reliable unit.
- The PRINTPAD 6000 Reloaded bar code printing terminal from Teklynx allows you to download labels and data from any PC to produce sophisticated bar code, graphic and alphanumeric labels.
- Using CODESOFT® label design software, the PRINTPAD 6000 Reloaded printing terminal works with over 1000 different thermal and thermal transfer printers.



Easier

- ▶ Simple installation and intuitive menus make it easy to generate any label, sheet or tag.
- ▶ Using the PRINTPAD 6000 terminal, you can download an entire product label for easy one-step printing.
- ▶ The PRINTPAD 6000 Reloaded is the ultimate in both ease of use and autonomy.

MORE Programmable

- ▶ With interfaces for all popular bar code printers, the PRINTPAD 6000 Reloaded terminal allows you to organize printing for virtually any application.

MORE Powerful

- New** The Date and Effective date feature of the PRINTPAD 6000 Reloaded ensures accurate traceability.
- New** Print EAN 128 bar codes for efficient inventory maintenance.
- New** Download a database of your products and customers.

- ▶ The PRINTPAD 6000 terminal allows you to control print jobs either by scanning bar codes or via keyboard entry.
- ▶ Operating up to 3 printers simultaneously the PRINTPAD 6000 Reloaded terminal can store ten of label formats and can import data from scales, scanners and verifiers.

PRINTPAD™ 6000 Reloaded

NEW

Benefits

- Easy to use
- Stand-alone and light weight
- Replaces a PC - perfect for industrial working conditions where space, safety and durability are important
- Built-in bar code scanning for speed and accuracy
- Stores a thousand of label formats
- Information is kept in memory if terminal is unplugged
- Imports data from scales, scanners and verifiers
- 1 year warranty
- Extended warranty available
- Euro compatible

PRINTPAD 6000 Reloaded SPECIFICATIONS

Small Size	7.48" x 5.43" x 1.89" - 190 mm x 138 mm x 48 mm
Weight	0.445 kgs. (~ 1 pound)
Power Supply	7.5V 300mA - standard jack
Operating Temperature	0° to 45°C (32° to 113°F)
Storage Temperature	-10° to 60°C (14° to 140°F)
Relative humidity	Max 90%
Parallel Port	1 (one way)
Serial Port	2 RS232 (RJ45), speed 9600 to 115200 bps
Reader Port	1 Wand TTL type interface (RJ45)
Display	Graphic 192 x 64 pixels (8x30 char)
	Led Backlight
Keyboard	47 Keys Alphanumeric
	Waterproof membrane keyboard
Memory	256 kB internal SRAM
	2 MB flash memory (1.5 MB for user data)
Real time clock	Date & time. Protected by NiMh. Battery
Bar Code Decoder	Code 39, 2/5 Interleaved, Code128, EAN8, EAN13, UPC-A, UPC-E, EAN128
Programming Language	MCL
Operating System	MCL OS 3.0
Regulations	CE (call for more informations)
Label Design Software Supported	CODESOFT 6.04/CODESOFT Enterprise RFID
Formulas Management	Allows the EAN 128 bar code creation
Database Management	Access to the ASCII database
Date/Hour	Allows the offset date management in several languages

Additional Functionality

- On board real time clock
- Send variable data to a stored format via scanner or keyboard input
- Support multiple devices at once

Switzerland • **OPAL Associates AG** • Motorenstrasse 116 • CH-8620 **Wetzikon** • Telefon +41 (0)1 931 12 22 • Telefax +41 (0)1 931 12 20 • Email info@opal-holding.com • URL <http://www.opal.ch/> • OPAL Associates SA • Avenue des Boveresses 54 • Case postale 29 • CH 1000 **Lausanne 21** • Telefon +41 (0)21 653 95 00 • Telefax +41 (0)21 653 95 02 • Email info@opal-holding.com • URL <http://www.opalsa.ch/> • Germany • **OPAL Associates GmbH** • Lohnerhofstrasse 2 • D-78467 **Konstanz** • Telefon +49 (0)7531 813 000 • Telefax +49 (0)7531 813 00 99 • Email info@opal-holding.com • URL <http://www.opalgbmh.de/> • OPAL Associates GmbH • Osterholder Allee 2 • 25421 **Pinneberg** • Telefon +49 (0)4101 787 615 • Telefax +49(0)4101 787 616 • Email info@opal-holding.com • OPAL Associates GmbH • **München** • Telefon +49 (0)89 12737 556 • Telefax +49 (0)89 12737 557 • Email info@opal-holding.com • OPAL Associates GmbH • **Frankfurt** • Telefon +49 (0)69 8236 6501 • Telefax +49 (0)69 8236 7709 • Email info@opal-holding.com • OPAL Solutions GmbH • Wilhelmstr. 22 • 52428 **Jülich** • Telefon +49 (0)2461 936 770 • Telefax +49(0)2461 936 771 • Email info@opal-holding.com • URL <http://www.opal-solutions.de/> • Austria • **OPAL Associates GesmbH** • Vorarlberger Wirtschaftspark • A-6840 **Götzis** • Telefon +43 (0) 5523 58833 • Telefax +43 (0)5523 521569 • Email info@opal-holding.com • URL <http://www.opalgbmh.at/> • OPAL Associates GesmbH • Donaufelderstr. 101/2/8 • **1210 Wien** • Telefon +43 (0)1 270 03 13 • Telefax +43(0)1 270 03 15 • Email info@opalgbmh.at

