



## **AS/400 Remote Out Queue Set-up for Zebra Printers**

**(Must be used for EPL and CPCL printer)**

EPL and CPCL printers do not support Printer Job Language (PJL), SNMP or ZBI and therefore these printers can't be used as AS/400 devices using the **CRTDEVPRT** command.

ZPL Ethernet, Wired or Wireless, printers can be driven as a local device (**CRTDEVPRT**) or remote out queue (**CRTOUTQ**). The later is much easier to configure and should be used unless the AS/400 device support (**CRTDEVPRT**) is requested.

(This also applies to mobile printers that are CPCL printers running the ZBI emulation.)

To generate the required EPL, CPCL or ZPL output file the following software tools are recommended.

**CPCL Printers** - **Label Vista** should be used to generate the CPCL output files.  
This can be downloaded from [http://www.zebra.com/SD/product\\_LabelVista.htm](http://www.zebra.com/SD/product_LabelVista.htm)  
(This file is 2MB)

**EPL Printers** - **BAR-ONE 6** should be used to generate the EPL output files.  
Bar One 6 Lite can be downloaded from: [http://www.zebra.com/SD/barone\\_60.htm](http://www.zebra.com/SD/barone_60.htm)  
(This file is 17MB)

**ZPL Printers** - **BAR-ONE for AS/400** should be used to generate the ZPL output files  
This can be downloaded from: [ftp://ftp.zebra.com/pub/barone\\_pv/deAS400.zip](ftp://ftp.zebra.com/pub/barone_pv/deAS400.zip)  
**This also includes instructions on how to configure Zebra printer as a device (CRTDEVPRT)**  
(This file is 19MB)

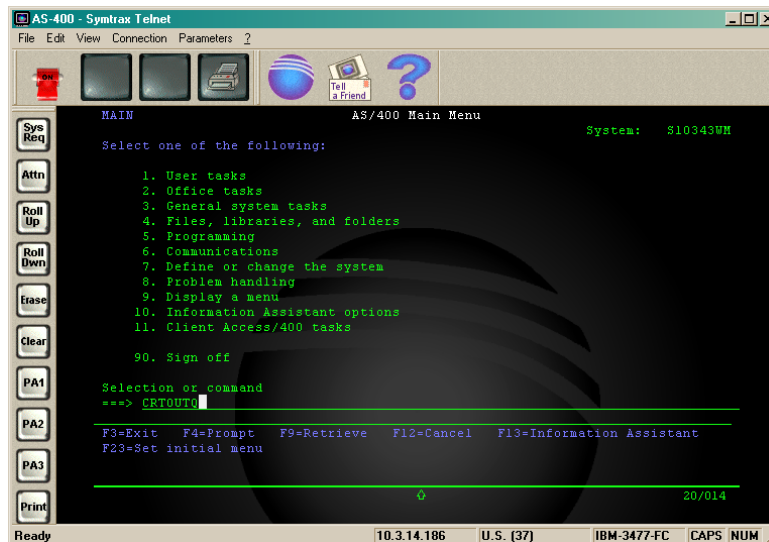
To configure the Remote Output Queue for the AS/400, the three steps below should be followed.

1. **CRTOUTQ** (Here we are looking, specifically, at a CPCL printer)
2. **WSCST** (Workstation customisation)
3. **OVRPRTF** (Override with printer file)

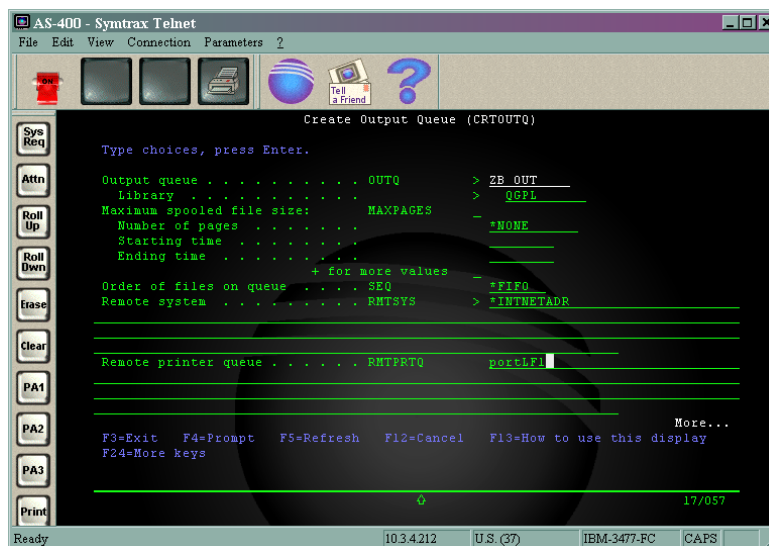
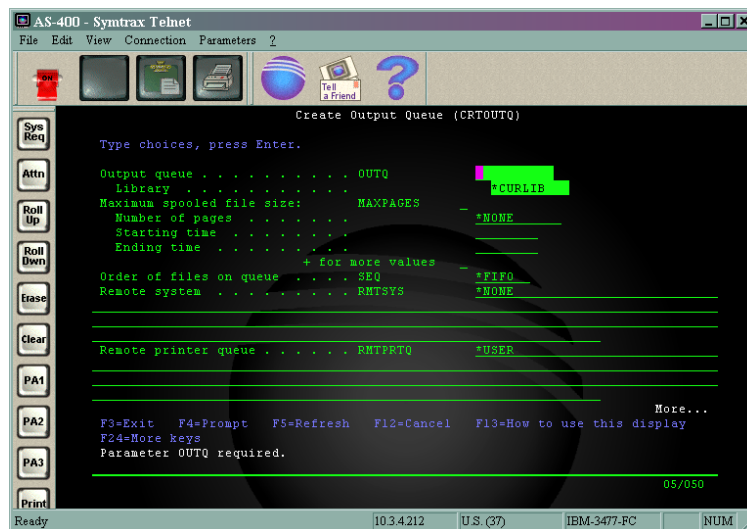


## 1. CRTOUTQ

The OUTQ is created as shown below:

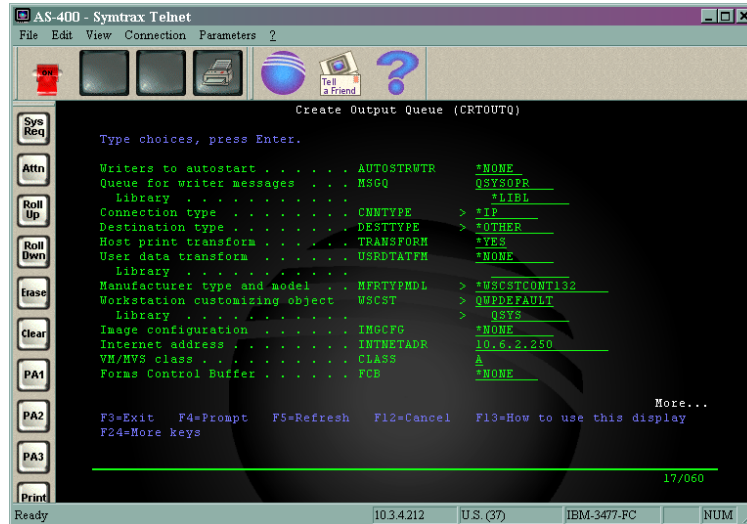


- ❖ Type **CRTOUTQ** and press **ENTER**
- ❖ Press **F9**, this will show all the different parameters for this particular activity
- ❖ Press **F11**, this will show the command line parameter name

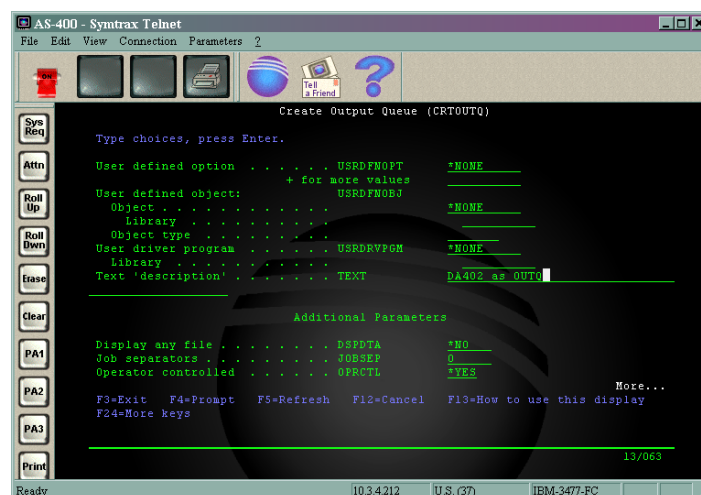


- ❖ Enter the name for your Output queue
  - Here it is **ZB\_OUT**
- ❖ Set the Library to **QGPL**
- ❖ Change Remote System to **\*INTNETADR**
- ❖ Change Remote Printer Queue to **portLF1** (Please note the case)
- ❖ Press **Page Down**

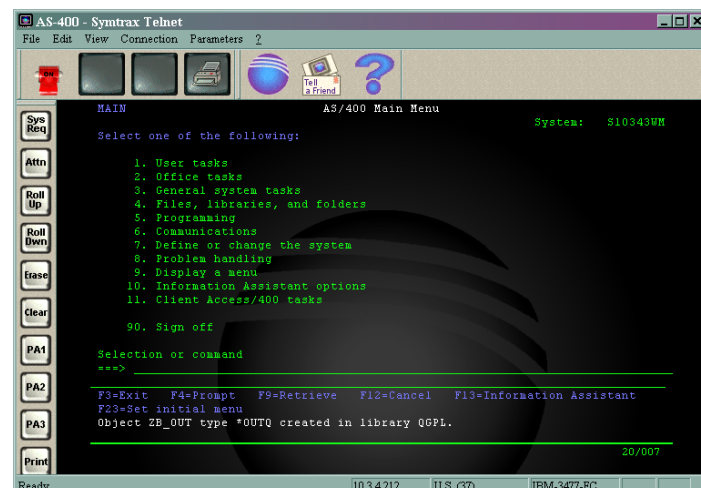
## 2. WSCST



- ❖ Set **Writers to autostart** to **1**
- ❖ Change the Queue for writer messages / Library to **QSYSOPR**
- ❖ Change Connection type to **\*IP**
- ❖ Set Destination type to **\*OTHER**
- ❖ Change the Manufacturer type and model to **WSCSTCONT132**
- ❖ The “Workstation customising object” is set as **QWPDEFAULT**
- ❖ And the library is set as **QSYS**
- ❖ Set the Internet address to that of the printer being used
- ❖ Set Print separator page to **\*NO**
- ❖ Press **Page Down**

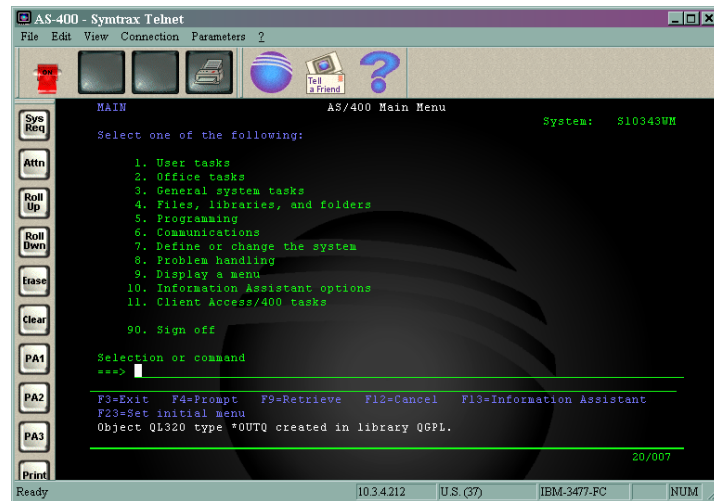


- ❖ **TAB** to, and change the Text ‘description’ to something meaning full
- ❖ Press **ENTER**



- ❖ If the operation was successful then a message similar to that above will be shown

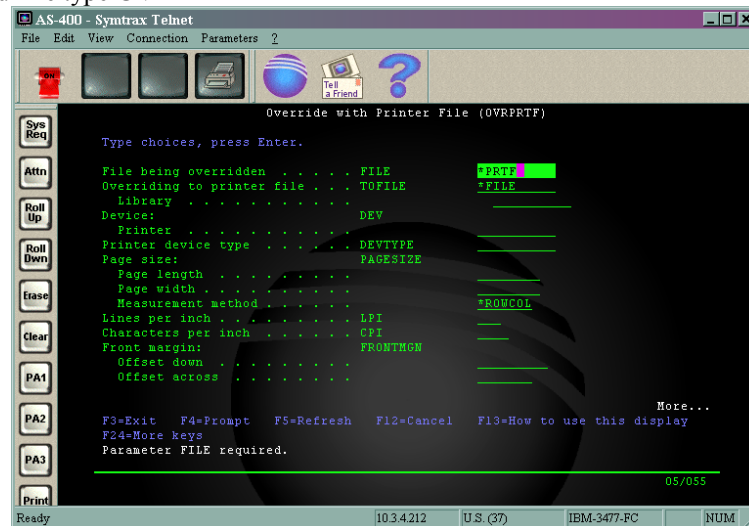
- Object ZB\_OUT type \*OUTQ created in library QGPL.



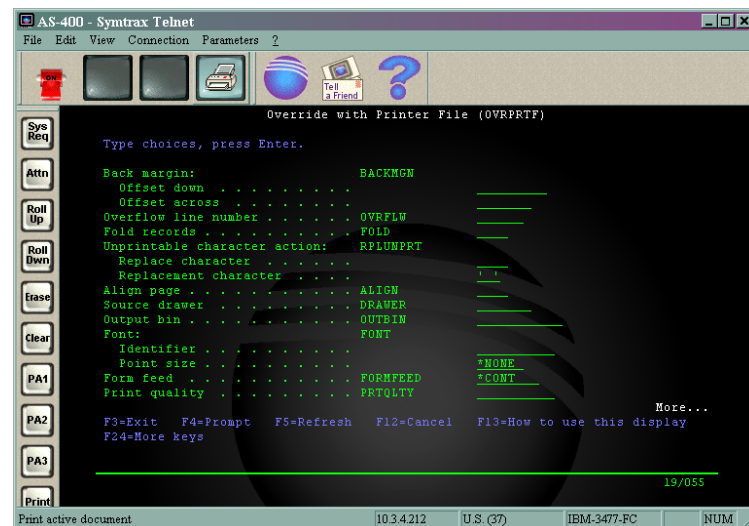
- ❖ After which you should get a screen like the one above

### 3. OVRPRTF

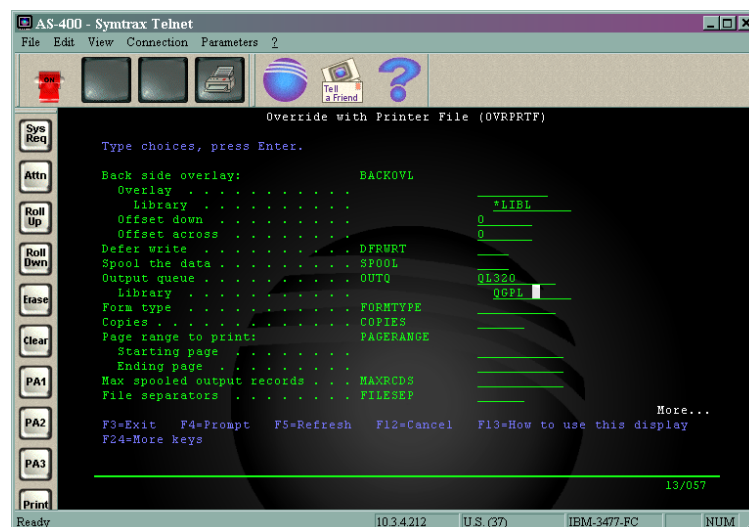
At the command line type **OVRPRTF**



- ❖ Set the “File being overridden” to **\*PRTF**
- ❖ Page down to the next screen



- ❖ Set the “Form feed” to **\*CONT**
- ❖ Page down, about, 4 more screens



- ❖ Set the “Output queue” to the name of the **OUTQ** you want to use
- ❖ Set the “Library” to that the **OUTQ** was created in
- ❖ Then press **ENTER**

Now whenever **CPYF FROMFILE(QGPL/TEST1) TOFILE(QPCSMPT)** is entered the job will automatically go to the **OUTQ**, and print without a blank label following the printed labels